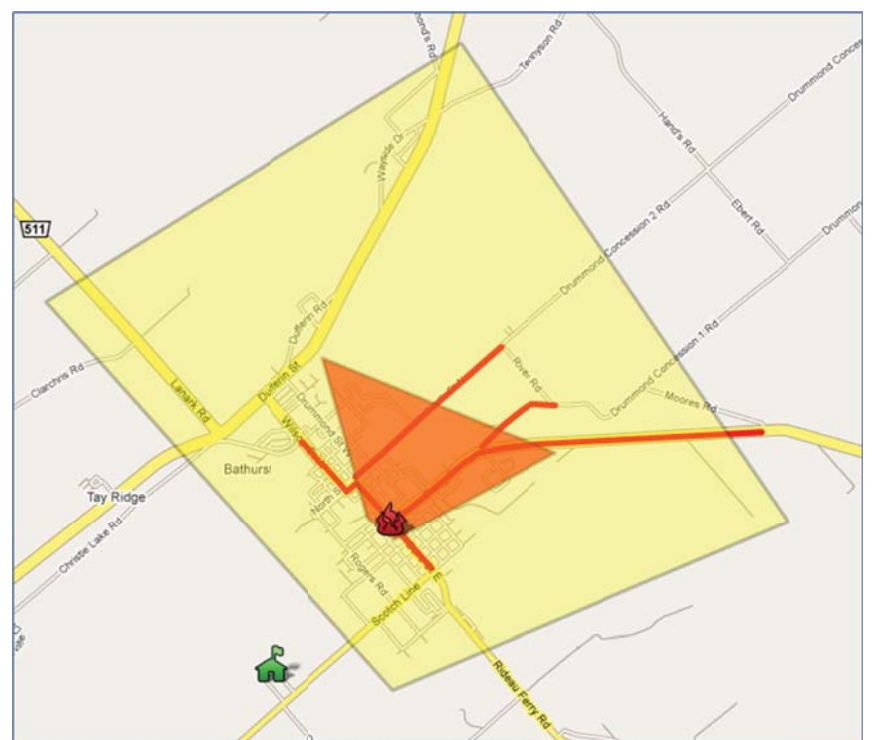


# Geospatial Presentation of Alerts, Notices, and Situational Awareness Information



CAPAN is leading efforts to define requirements that support a common geospatial presentation of CAP-CP alerts, notices and situational awareness information, and the conversion of CAP-CP to GeoRSS and KML. The objective is a common operational picture for all.

For more information visit [www.CAPAN.ca/geopresent](http://www.CAPAN.ca/geopresent)



-  Industrial Fire
-  Evacuation Zone
-  Alert Area
-  Shelter Location
-  Road Closed



Canadian Association  
for Public Alerting and Notification  
Association Canadienne  
d'avis et d'alert au Public



[www.geoconnections.org](http://www.geoconnections.org)